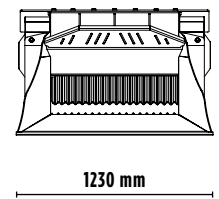
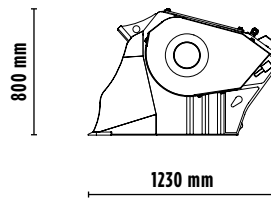
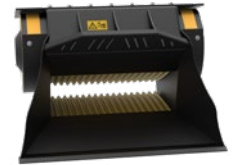
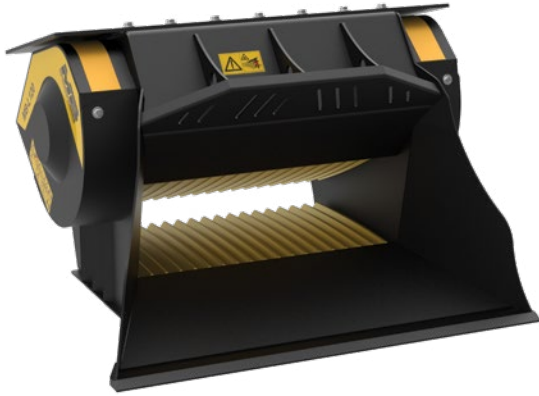


MB-L120 S2




ACCESSORIES

- RECOMMENDED SPARE PARTS KIT
- FIXED COUPLING
- HOUR METER
- DUST SUPPRESSION KIT
- 24 MONTHS WARRANTY



SPECIFICATIONS

EQUIPMENT	 $\geq 3 \leq 12$ Ton
LOAD CAPACITY	0,19 m ³
OPENING DIMENSIONS	L 730 H 250 mm
OUTPUT SETTING	$\geq 15 \leq 60$ mm
DIMENSIONS	1230 x 1230 H 800 mm
OIL FLOW	95 l/min.
PRESSURE	> 200 bar
COUNTER PRESSURE	< 10 bar
WEIGHT	0,95 Ton

AREAS OF APPLICATION



RECYCLING



SMALL URBAN
WORKSITES



ROAD WORKS



SMALL
DEMOLITION SITES

The data provided above is not binding, as the manufacturer reserves itself the right to make improvements to its products at any time and with no advance notice. References to excavator weights are approximate and many may be subject to changes.

Rev. 2020 / 07



WWW.MBCRUSHER.COM